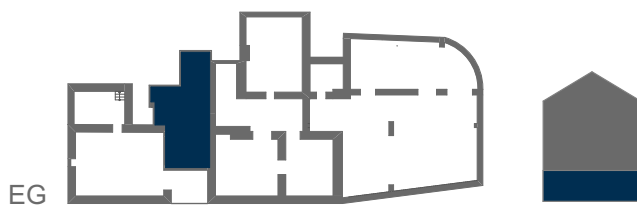


M 1:100



Lokal	26,19 m <sup>2</sup>
Zulieferraum	10,04 m <sup>2</sup>
Vorraum	2,39 m <sup>2</sup>
WC	1,73 m <sup>2</sup>
Abstnische	2,50 m <sup>2</sup>
<b>Gesamt</b>	<b>42,85 m<sup>2</sup></b>