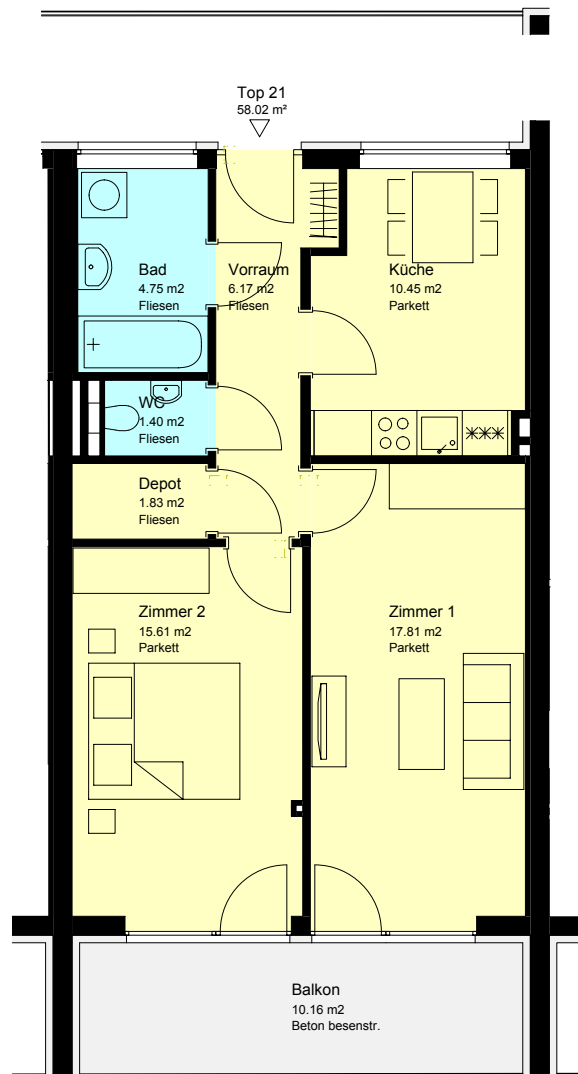


Projekt Flurgasse 23, 8010 Graz

2. Obergeschoss

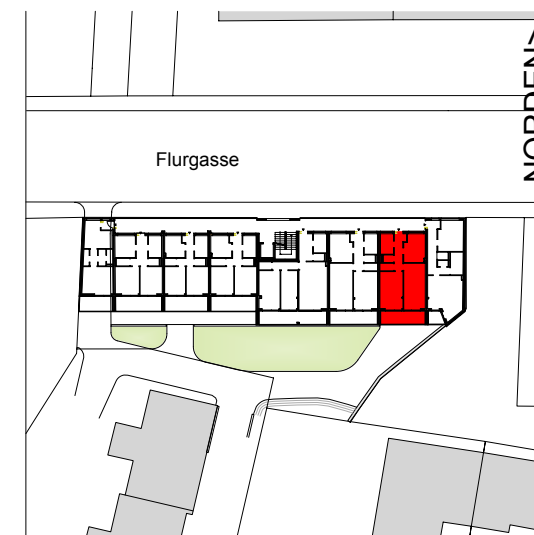


Top 21 - M 1:100

Grundriss

Top 21 - 58,02 m²

Vorraum	Fliesen	6,17 m ²
Bad	Fliesen	4,75 m ²
WC	Fliesen	1,40 m ²
Depot	Fliesen	1,83 m ²
Küche	Parkett	10,45 m ²
Zimmer 1	Parkett	17,81 m ²
Zimmer 2	Parkett	15,61 m ²
Summe Top 21		58,02 m²
Balkon		10,16 m ²



Lage 1:1000