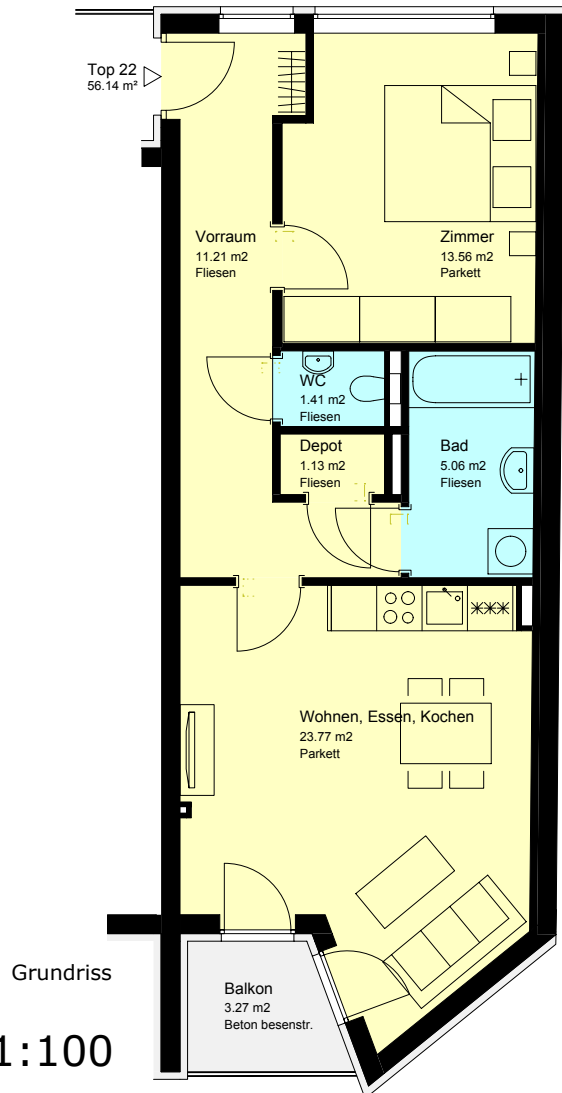


Projekt Flurgasse 23, 8010 Graz

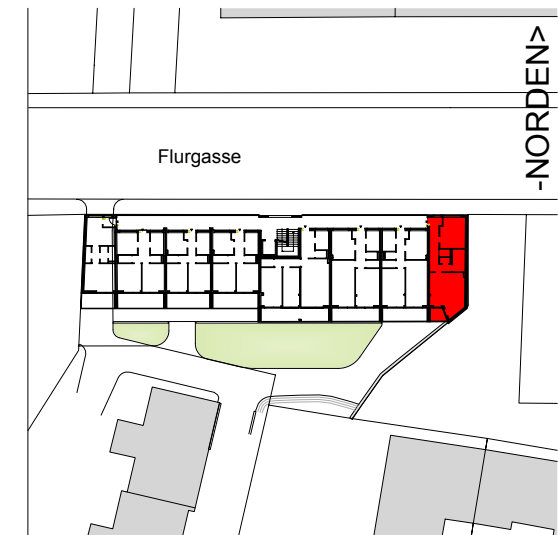
2. Obergeschoss



Top 22 - M 1:100

Top 22 - 56,14 m²

| | | |
|-----------------------|---------|----------------------------|
| Vorraum | Fliesen | 11,21 m ² |
| Bad | Fliesen | 5,06 m ² |
| WC | Fliesen | 1,41 m ² |
| Depot | Fliesen | 1,13 m ² |
| Wohnen, Essen, Kochen | Parkett | 23,77 m ² |
| Zimmer | Parkett | 13,56 m ² |
| Summe Top 22 | | 56,14 m² |
| Balkon | | 3,27 m ² |



Lage 1:1000