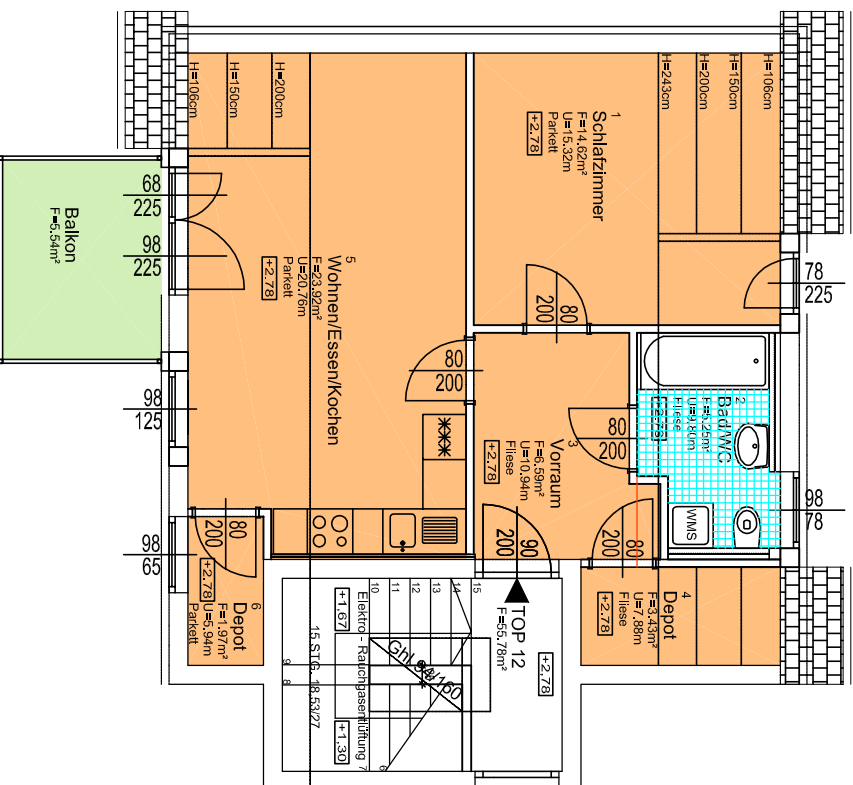


Projekt ST. PETER-HAUPTSTRASSE 310a, 310b

Dachgeschoss



Haus 2, Top 12, 55.78m²

1	Schlafzimmer	Parkett	15.32m	14.62m ²
2	Bad/WC	Fliese	9.80m	5.25m ²
3	Vorräum	Fliese	10.94m	6.59m ²
4	Depot	Fliese	7.88m	3.43m ²
5	Wohn./Es./Koch.	Parkett	20.76m	23.92m ²
6	Depot	Parkett	5.94m	1.97m ²
Summe:	Balkon	Fliese	9.48m	55.78m ²

Lageplan

