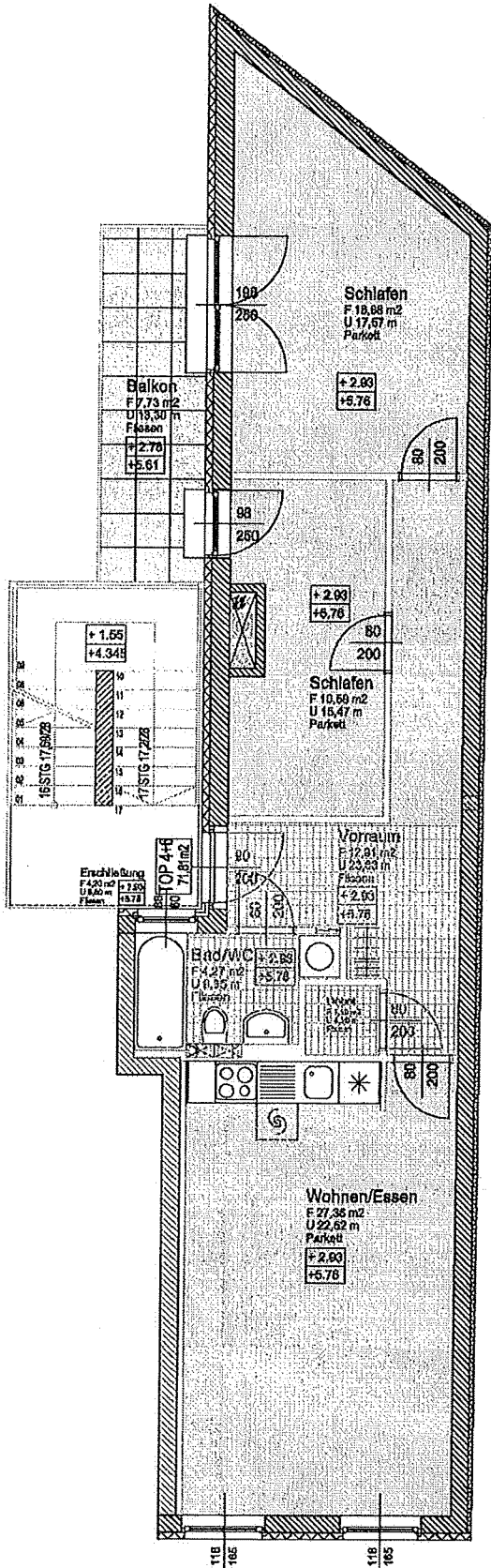


# Projekt JAKOMINISTRASSE 31

## 1./2. Obergeschoß



Top 4+6, 73.11m<sup>2</sup>

1	Vorraum	Fliesen	23.63m	12.91m <sup>2</sup>
2	Depot	Fliesen	4.20m	1.10m <sup>2</sup>
3	Bad/WC	Fliesen	9.35m	4.27m <sup>2</sup>
4	Wohnen/Essen	Parkett	22.52m	27.36m <sup>2</sup>
5	Schlafen	Parkett	15.47m	10.59m <sup>2</sup>
6	Schlafen	Parkett	17.57m	16.88m <sup>2</sup>
SUMME:				73.11m <sup>2</sup>
	Balkon	Fliesen	10.80m	5.97m <sup>2</sup>

Lageplan

