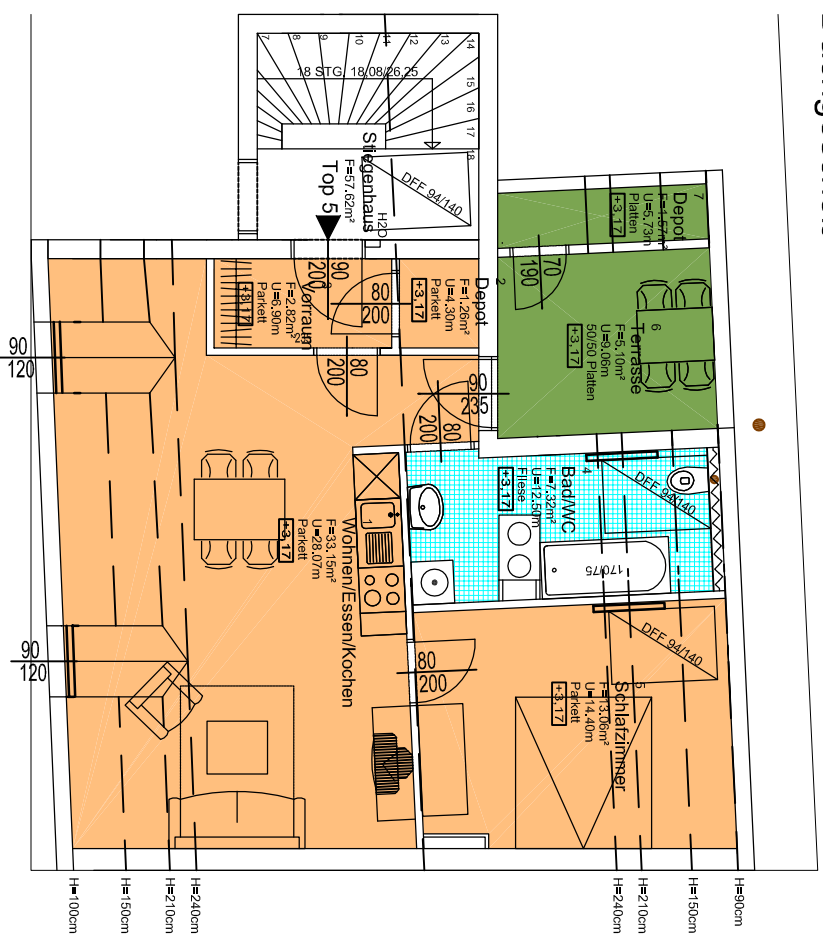


# PROJEKT JOSEFIGASSE 22, 8020 GRAZ

## Dachgeschoss



## Top 5, 57.62m<sup>2</sup>

1	Wohn./Ess./Koch.	Parkett	33.15m <sup>2</sup>
2	Depot	Parkett	1.26m <sup>2</sup>
3	Vorraum	Parkett	2.82m <sup>2</sup>
4	Bad/WC	Fliese	7.32m <sup>2</sup>
5	Schlafzimmer	Parkett	13.06m <sup>2</sup>
SUMME:			57.62m <sup>2</sup>
6	Terrasse	50/50 Platten	5.10m <sup>2</sup>
7	Depot	Platten	1.57m <sup>2</sup>
SUMME:			6.67m <sup>2</sup>

## Lageplan

