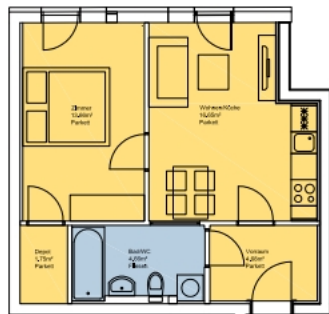


Projekt Annenstrasse 35, 8020 Graz

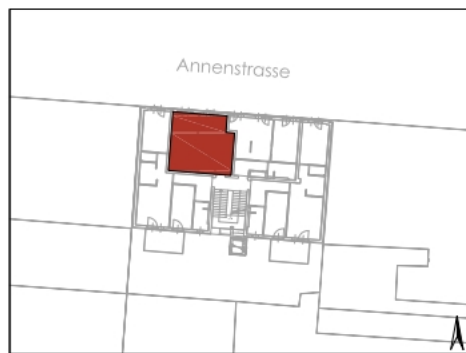
3 Obergeschoss

Top 3.12_41,40m²

1	Vorraum	Parkett	4,68m ²
2	Depot	Parkett	1,75m ²
3	Bad/WC	Fliesen	4,66m ²
4	Küche/Wohnen	Parkett	16,65m ²
5	Zimmer	Parkett	13,66m ²
	SUMME		41,40m ²



Top 3.12
41,40m²



LAGEPLAN