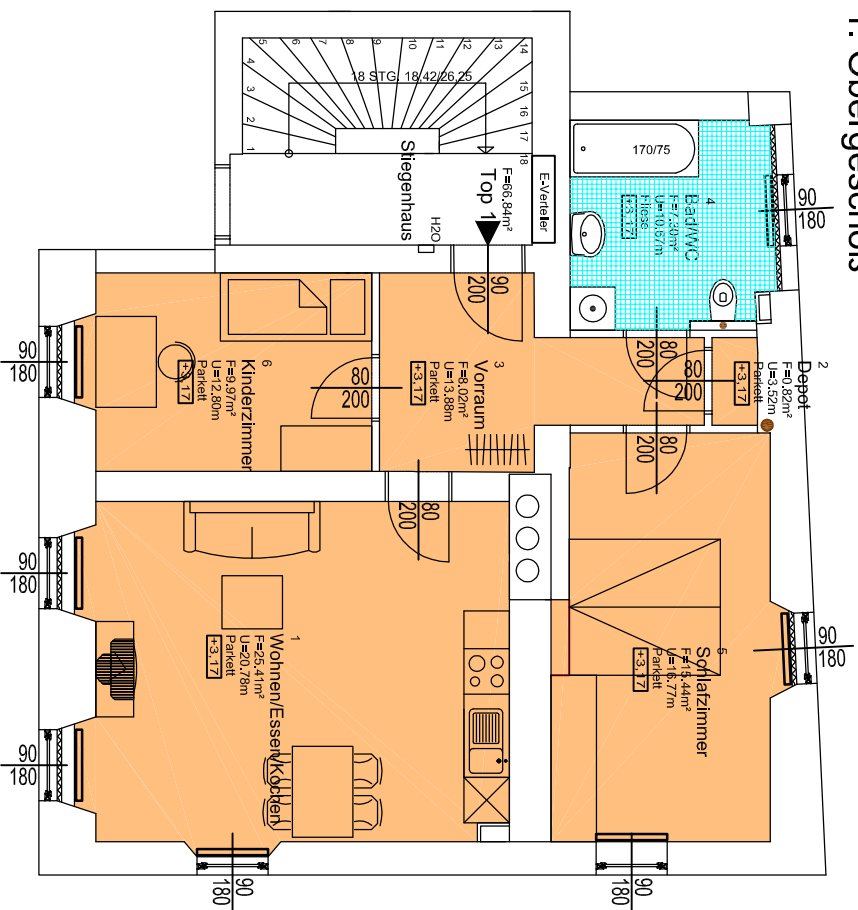


PROJEKT JOSEFIGASSE 22, 8020 GRAZ

1. Obergeschoss



Top 1, 66.84m²

Room Number	Room Name	Flooring	Area (m²)
1	Wohn./Ess./Koch.	Parkett	25,41m²
2	Depot	Parkett	0,82m²
3	Vorraum	Parkett	8,02m²
4	Bad/WC	Fliese	7,30m²
5	Schlafzimmer	Parkett	16,77m²
6	Kinderzimmer	Parkett	9,97m²
SUMME:			66,84m²

Lageplan

